



PFMF332S-150
3-LINE + GROUND SCIF/TEMPEST FILTER

SPECIFICATIONS

- MAX VOLTAGE: 0-277/0-480VAC
- MAX CURRENT: 150A/LINE
- FREQUENCY: 50/60HZ
- OPERATING TEMP.: -40 TO 65C
- HIPOT (L-G): 2200VDC
- DISCHARGE VOLT. (@277V): <30V IN 30S
- VOLT. DROP: <2% MAX AT FULL RATED UNITY LOAD
- OVERLOAD: 140% RATED CURRENT FOR 15 MINUTES
- PERFORMANCE: >100dB (14KHZ TO 40GHZ)
- SHIELDING EFFECTIVENESS: >100dB (14KHZ TO 40GHZ)
- ENCLOSURE: NEMA 1 (14GA MINIMUM)
- MANUFACTURED IN ACCORDANCE WITH

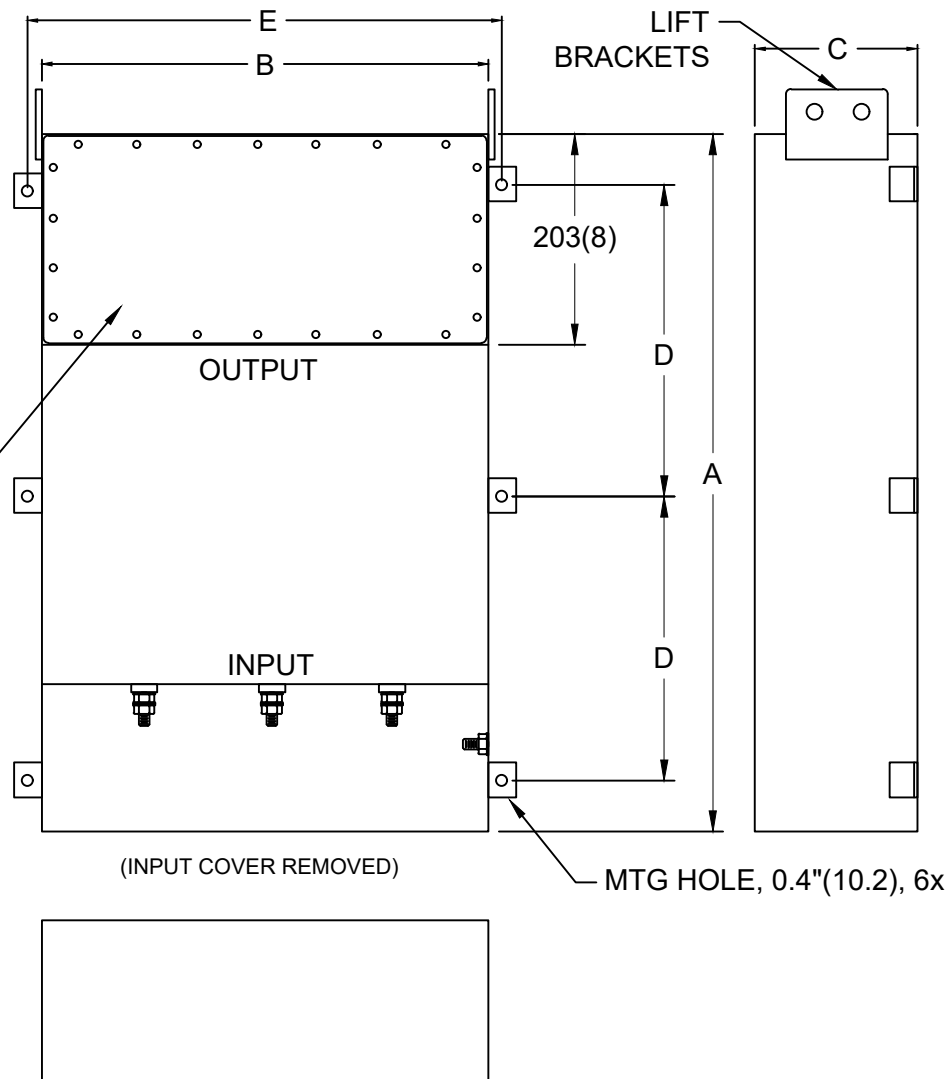
THE FOLLOWING STANDARDS:

- MIL-STD-220
- MIL-F-15733
- MIL-STD-810
- MIL-STD-202
- MIL-STD-285
- LV DIRECTIVE



CONFORMS TO
 UL STD 1283

EMI
 GASKETED OUTPUT
 COMPARTMENT



NOTES:

1. CONDUIT CUTOUTS BY END USER.
2. FOR DIFFERENT CUTOUTS, CONSULT FACTORY.
3. FILTER IS BIDIRECTIONAL. IF INSTALLING FILTER INTERNAL TO SCIF RUN POWER INPUT WIRING INTO FILTER EMI GASKETED OUTPUT COMPARTMENT.

MODEL	AMPS	TERMINAL	DIMENSIONS, MM(IN)					WEIGHT LBS(KG)
			A	B	C	D	E	
PFMF332S-150	150	M10	914	482	203	406	532	150 (68.2)
			(36)	(19)	(8)	(16)	(21)	