



PFMF342S-100
4-LINE + GROUND SCIF/TEMPEST FILTER

SPECIFICATIONS

- MAX VOLTAGE: 0-277/0-480VAC
- MAX CURRENT/LINE: 100A
- FREQUENCY: 50/60HZ
- OPERATING TEMP.: -40 TO 65C
- HIPOT(LINE-GROUND): 2200VDC
- DISCHARGE VOLT. (@277V): <30V IN 30S
- VOLT. DROP: <2% AT FULL RATED UNITY LOAD
- OVERLOAD: 140% OF RATED CURRENT FOR 15 MINUTES
- HARMONIC DISTORTION: 2.5% MAX (UNITY PF LOAD)
- INSULATION RESISTANCE: PER UL1283 & MIL-F-15733
- PERFORMANCE: >100dB (14KHZ TO 40GHZ)
- RF RADIATION / SHIELDING EFFECTIVENESS: >100dB (14KHZ TO 40GHZ)
- ENCLOSURE: NEMA 1 (16GA MINIMUM)
- MANUFACTURED IN ACCORDANCE WITH THE

FOLLOWING STANDARDS:

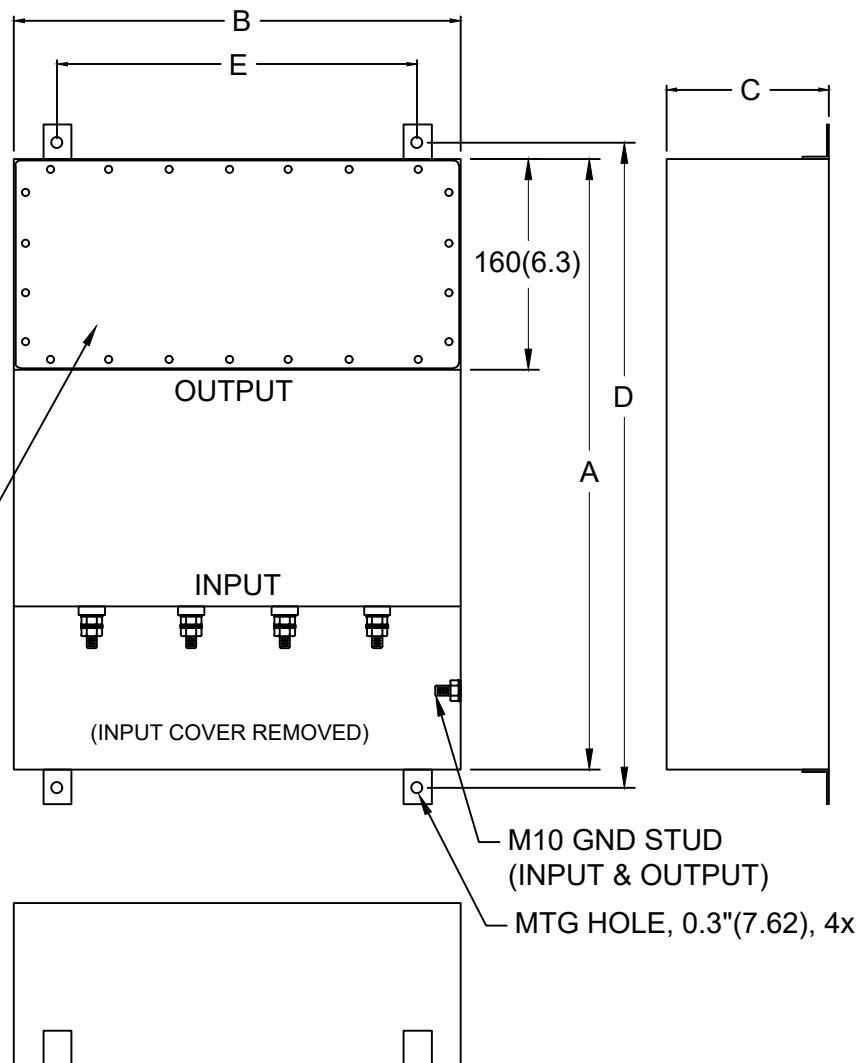
- MIL-STD-220
- MI-F-15733
- MIL-STD-810
- MIL-STD-202
- MIL-STD-285
- LV DIRECTIVE



CONFORMS TO
 UL STD 1283

**GASKETED OUTPUT
 COMPARTMENT**

EMI



NOTES:

1. CONDUIT CUTOUTS BY END USER.
2. FILTER IS BIDIRECTIONAL. IF INSTALLING FILTER INTERNAL TO SCIF RUN POWER INPUT WIRING INTO FILTER EMI GASKETED OUTPUT COMPARTMENT.
3. FILTER PROVIDED WITH QTY 4 CIRCULAR EMI GASKETS.

MODEL	AMPS	TERMINAL	DIMENSIONS - MM (IN)					WEIGHT LBS(KG)
			A	B	C	D	E	
PFMF342S-100	100	M10	838	558	160	876	508	145 (66)
			(33)	(22)	(6.3)	(34.5)	(20)	