



PFMF342S-16
4-LINE + GROUND SCIF/TEMPEST FILTER

SPECIFICATIONS

MAX VOLTAGE: 0-277/0-480VAC
 MAX CURRENT/LINE: 16A
 FREQUENCY: 50/60HZ
 OPERATING TEMP.: -40 TO 65C
 HIPOT(LINE-GROUND): 2200VDC
 DISCHARGE VOLT. (@277V): <30V IN 30S
 VOLT. DROP: <2% AT FULL RATED UNITY LOAD
 OVERLOAD: 140% OF RATED CURRENT FOR 15 MINUTES
 PERFORMANCE: >100dB (14KHZ TO 40GHZ)
 SHIELDING EFFECTIVENESS: >100dB (14KHZ TO 40GHZ)
 ENCLOSURE: NEMA 1 (16GA MINIMUM)
 MANUFACTURED IN ACCORDANCE WITH THE

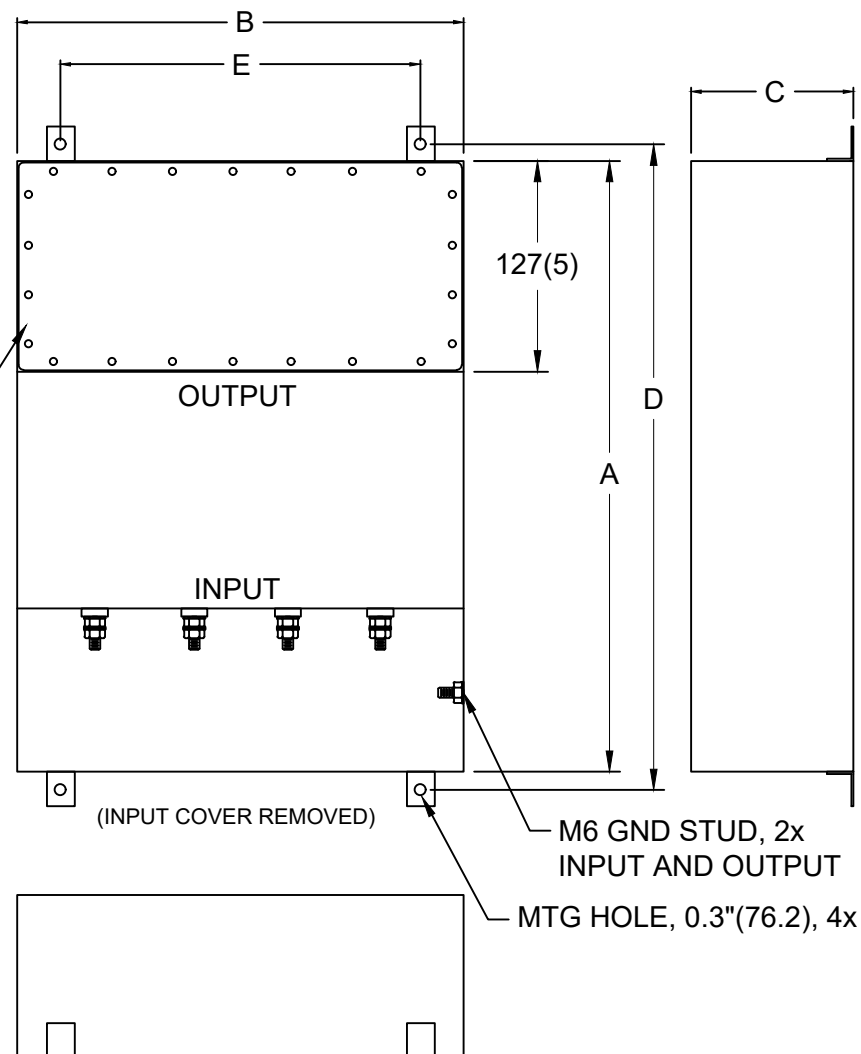
FOLLOWING STANDARDS:

MIL-STD-220
 MI-F-15733
 MIL-STD-810
 MIL-STD-202
 MIL-STD-285
 LV DIRECTIVE



CONFORMS TO
 UL STD 1283

EMI
 GASKETED OUTPUT
 COMPARTMENT



NOTES:

1. CONDUIT CUTOUTS BY END USER.
2. FILTER IS BIDIRECTIONAL. IF INSTALLING FILTER INTERNAL TO SCIF RUN POWER INPUT WIRING INTO FILTER EMI GASKETED OUTPUT COMPARTMENT.
3. FILTER PROVIDED WITH QTY 4 CIRCULAR EMI GASKETS.

MODEL	AMPS	TERMINAL	DIMENSIONS (MM)					WEIGHT LBS(KG)
			A	B	C	D	E	
PFMF342S-16	16	M6	610 (24)	381 (15)	127 (5)	648 (25.5)	331 (13)	58 (26.4)