



PFMF342S-200

4-LINE + GROUND SCIF/FACILITY FILTER

SPECIFICATIONS

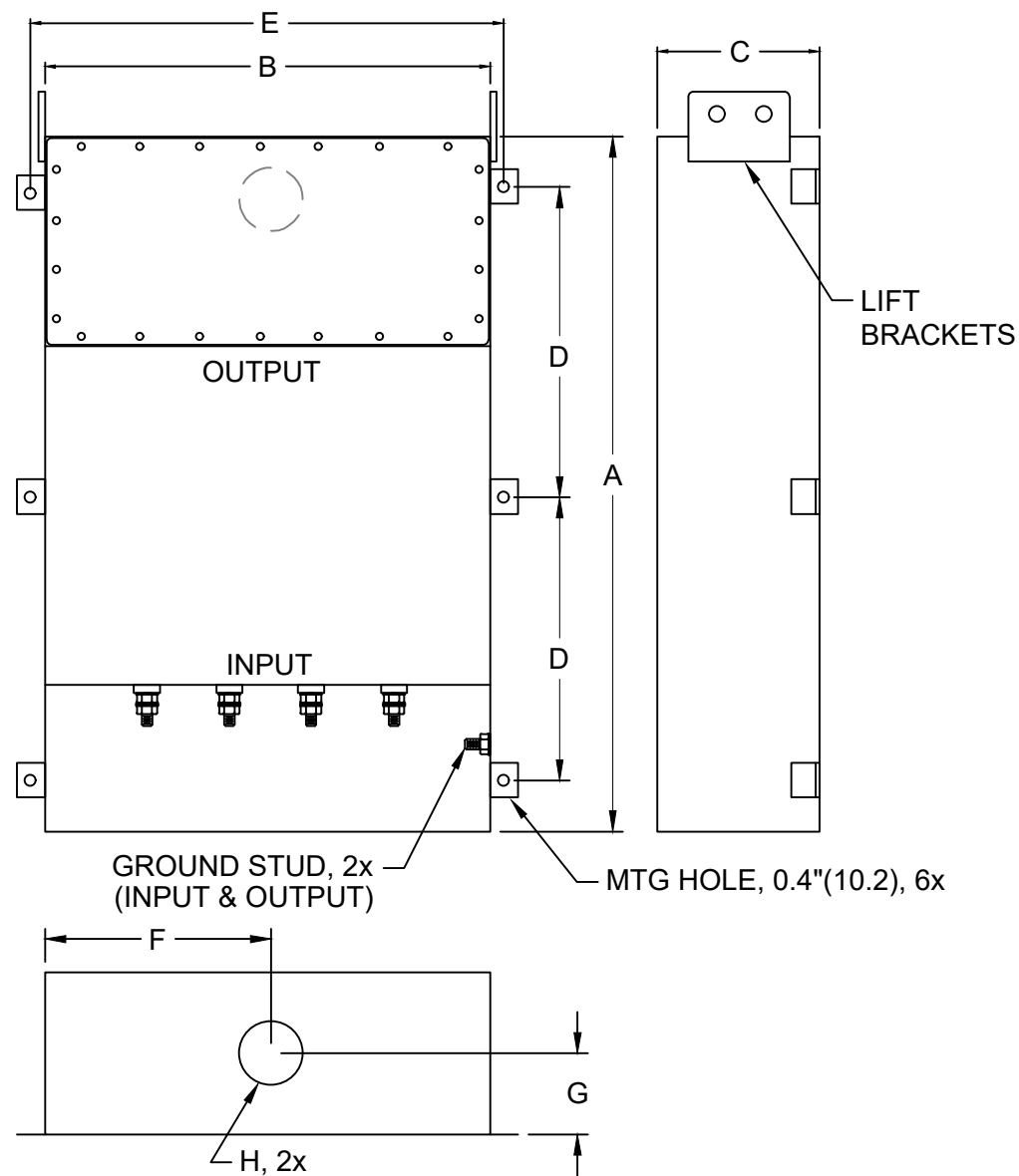
- MAX VOLTAGE: 0-277/0-480VAC
- MAX CURRENT/LINE: 200A
- FREQUENCY: 50/60HZ
- OPERATING TEMP.: -40 TO 65C
- HIPOT(LINE-GROUND): 2200VDC
- DISCHARGE VOLT. (@277V): <30V IN 30S
- VOLT. DROP: <2% AT FULL RATED UNITY LOAD
- OVERLOAD: 140% OF RATED CURRENT FOR 15 MINUTES
- PERFORMANCE: 100dB (14KHZ TO 40GHZ)
- MANUFACTURED IN ACCORDANCE WITH THE

FOLLOWING STANDARDS:

- MIL-STD-220
- MI-F-15733
- MIL-STD-810
- LV DIRECTIVE



CONFORMS TO
UL STD 1283



(FOR DIFFERENT CUTOUT SIZES OR LOCATIONS, CONSULT FACTORY)

MODEL	AMPS	TERMINAL	DIMENSIONS, MM(IN)								WEIGHT LBS(KG)	MTG LEGS OPTIONAL
			A	B	C	D	E	F	G	H		
PFMF342S-200	200	M12	1067	711	254	483	761	356	127	75	285 (129.5)	342250ML
			(42)	(28)	(10)	(19)	(30)	(14)	(5)	(2.95)		