



PFMF342S-200
4-LINE + GROUND SCIF/TEMPEST FILTER

SPECIFICATIONS

- MAX VOLTAGE: 0-277/0-480VAC
- MAX CURRENT/LINE: 200A
- FREQUENCY: 50/60HZ
- OPERATING TEMP.: -40 TO 65C
- HIPOT(LINE-GROUND): 2200VDC
- DISCHARGE VOLT. (@277V): <30V IN 30S
- VOLT. DROP: <2% AT FULL RATED UNITY LOAD
- OVERLOAD: 140% OF RATED CURRENT FOR 15 MINUTES
- HARMONIC DISTORTION: 2.5% MAX (UNITY PF LOAD)
- PERFORMANCE: >100dB (14KHZ TO 40GHZ)
- SHIELDING EFFECTIVENESS: >100dB (14KHZ TO 40GHZ)
- ENCLOSURE: NEMA 1 (14GA MINIMUM)
- MANUFACTURED IN ACCORDANCE WITH THE

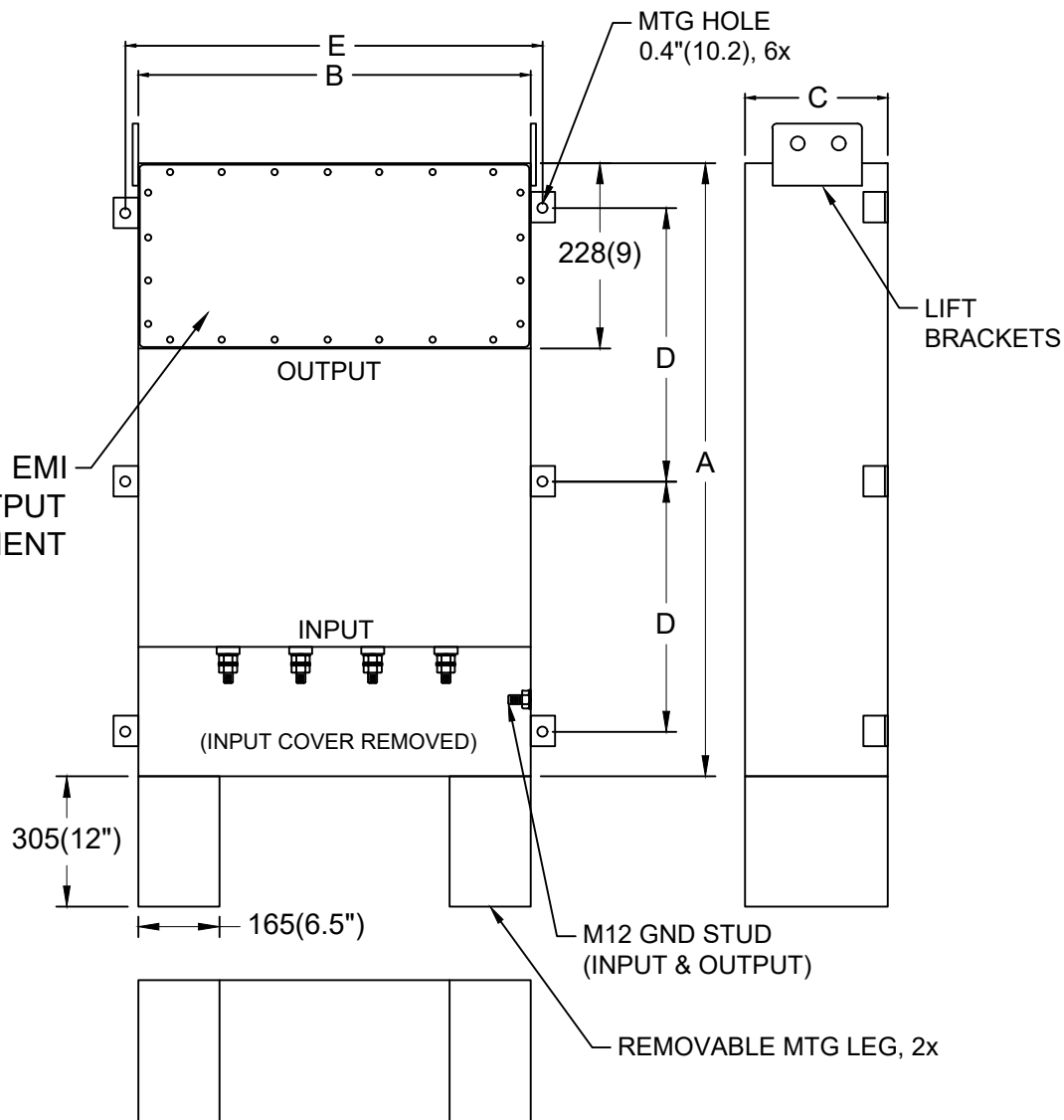
FOLLOWING STANDARDS:

- MIL-STD-220
- MI-F-15733
- MIL-STD-810
- MIL-STD-202
- MIL-STD-285
- LV DIRECTIVE



CONFORMS TO
UL STD 1283

GASKETED OUTPUT
COMPARTMENT



NOTES:

1. CONDUIT CUTOUTS BY END USER.
2. FILTER IS BIDIRECTIONAL. IF INSTALLING FILTER INTERNAL TO SCIF RUN POWER INPUT WIRING INTO FILTER EMI GASKETED OUTPUT COMPARTMENT.

MODEL	AMPS	TERMINAL	DIMENSIONS, MM(IN)					WEIGHT LBS(KG)
			A	B	C	D	E	
PFMF342S-200	200	M12	1067 (42)	711 (28)	254 (10)	483 (19)	761 (30)	285 (129.5)