



# PFMF342S-250

## 4-LINE + GROUND SCIF/FACILITY FILTER

### SPECIFICATIONS

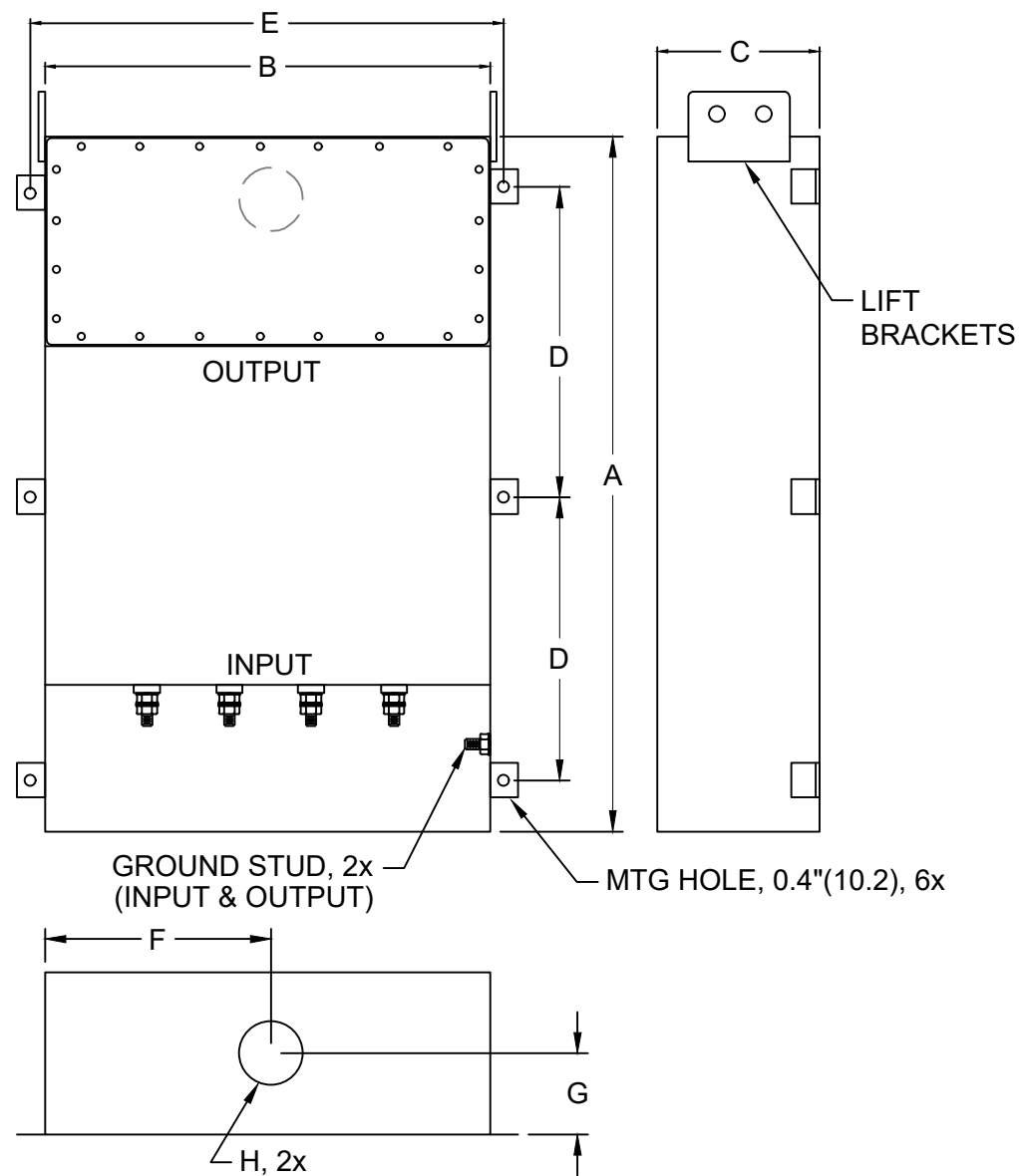
- MAX VOLTAGE: 0-277/0-480VAC
- MAX CURRENT/LINE: 250A
- FREQUENCY: 50/60HZ
- OPERATING TEMP.: -40 TO 65C
- HIPOT(LINE-GROUND): 2200VDC
- DISCHARGE VOLT. (@277V): <30V IN 30S
- VOLT. DROP: <2% AT FULL RATED UNITY LOAD
- OVERLOAD: 140% OF RATED CURRENT FOR 15 MINUTES
- PERFORMANCE: 100dB (14KHZ TO 40GHZ)
- MANUFACTURED IN ACCORDANCE WITH THE

### FOLLOWING STANDARDS:

- MIL-STD-220
- MI-F-15733
- MIL-STD-810
- LV DIRECTIVE



CONFORMS TO  
UL STD 1283



(FOR DIFFERENT CUTOUT SIZES OR LOCATIONS, CONSULT FACTORY)

| MODEL        | AMPS | TERMINAL | DIMENSIONS, MM(IN) |      |      |      |      |      |     |        | WEIGHT LBS(KG) | MTG LEGS<br>OPTIONAL |
|--------------|------|----------|--------------------|------|------|------|------|------|-----|--------|----------------|----------------------|
|              |      |          | A                  | B    | C    | D    | E    | F    | G   | H      |                |                      |
| PFMF342S-250 | 250  | M12      | 1067               | 711  | 254  | 483  | 761  | 356  | 127 | 75     | 285 (129.5)    | 342250ML             |
|              |      |          | (42)               | (28) | (10) | (19) | (30) | (14) | (5) | (2.95) |                |                      |