



## PFMF342S-32 4-LINE + GROUND SCIF/TEMPEST FILTER

### SPECIFICATIONS

MAX VOLTAGE: 0-277/0-480VAC  
 MAX CURRENT/LINE: 32A  
 FREQUENCY: 50/60HZ  
 OPERATING TEMP.: -40 TO 65C  
 HIPOT(LINE-GROUND): 2200VDC  
 DISCHARGE VOLT. (@277V): <30V IN 30S  
 VOLT. DROP: <2% AT FULL RATED UNITY LOAD  
 OVERLOAD: 140% OF RATED CURRENT FOR 15 MINUTES  
 PERFORMANCE: >100dB (14KHZ TO 40GHZ)  
 SHIELDING EFFECTIVENESS: >100dB (14KHZ TO 40GHZ)  
 ENCLOSURE: NEMA 1 (16GA MINIMUM)  
 MANUFACTURED IN ACCORDANCE WITH THE

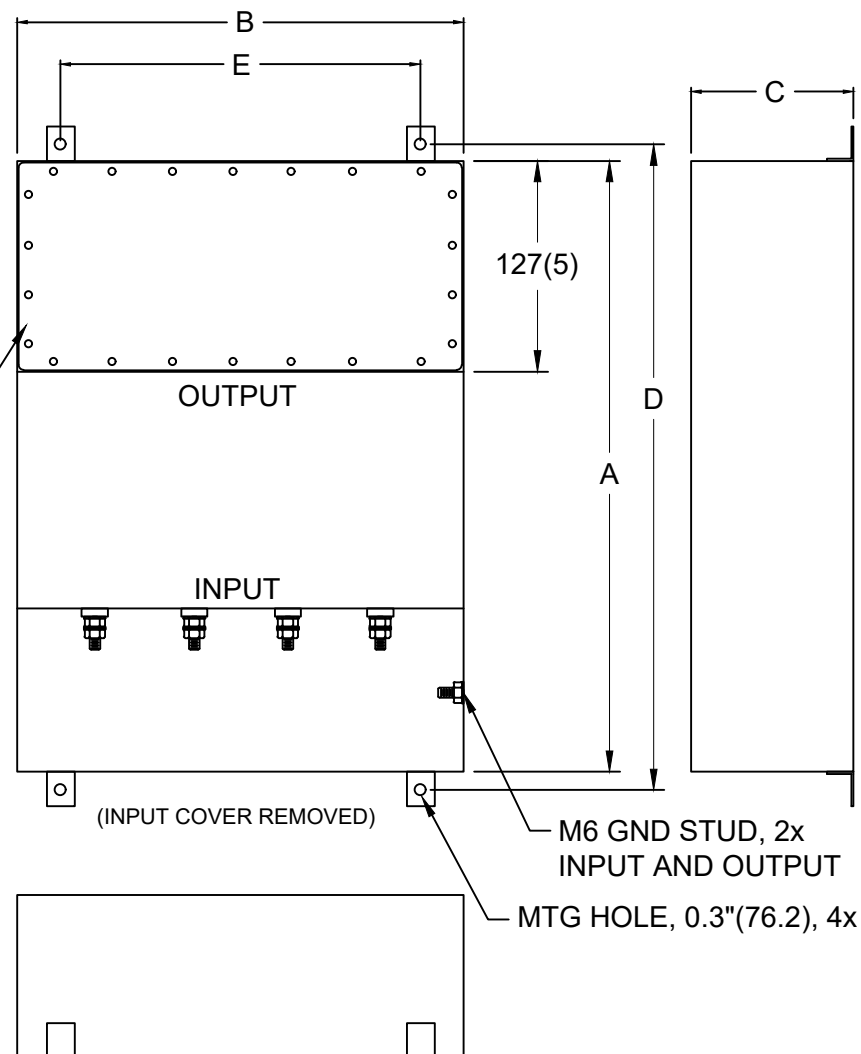
### FOLLOWING STANDARDS:

MIL-STD-220  
 MI-F-15733  
 MIL-STD-810  
 MIL-STD-202  
 MIL-STD-285  
 LV DIRECTIVE



CONFORMS TO  
UL STD 1283

EMI  
GASKETED OUTPUT  
COMPARTMENT



### NOTES:

1. CONDUIT CUTOUTS BY END USER.
2. FILTER IS BIDIRECTIONAL. IF INSTALLING FILTER INTERNAL TO SCIF RUN POWER INPUT WIRING INTO FILTER EMI GASKETED OUTPUT COMPARTMENT.
3. FILTER PROVIDED WITH QTY 4 CIRCULAR EMI GASKETS.

MODEL	AMPS	TERMINAL	DIMENSIONS (MM)					WEIGHT LBS(KG)
			A	B	C	D	E	
PFMF342S-32	32	M6	610 (24)	381 (15)	127 (5)	648 (25.5)	331 (13)	58 (26.4)