



PFMF342S-63 4-LINE + GROUND SCIF/TEMPEST FILTER

SPECIFICATIONS

MAX VOLTAGE: 0-277/0-480VAC

MAX CURRENT/LINE: 63A

FREQUENCY: 50/60HZ

OPERATING TEMP.: -40 TO 65C

HIPOT(LINE-GROUND): 2200VDC

DISCHARGE VOLT. (@277V): <30V IN 30S

VOLT. DROP: <2% AT FULL RATED UNITY LOAD

OVERLOAD: 140% OF RATED CURRENT FOR 15 MINUTES

PERFORMANCE: 100dB (14KHZ TO 40GHZ)

MANUFACTURED IN ACCORDANCE WITH THE

FOLLOWING STANDARDS:

MIL-STD-220

MI-F-15733

MIL-STD-810

LV DIRECTIVE

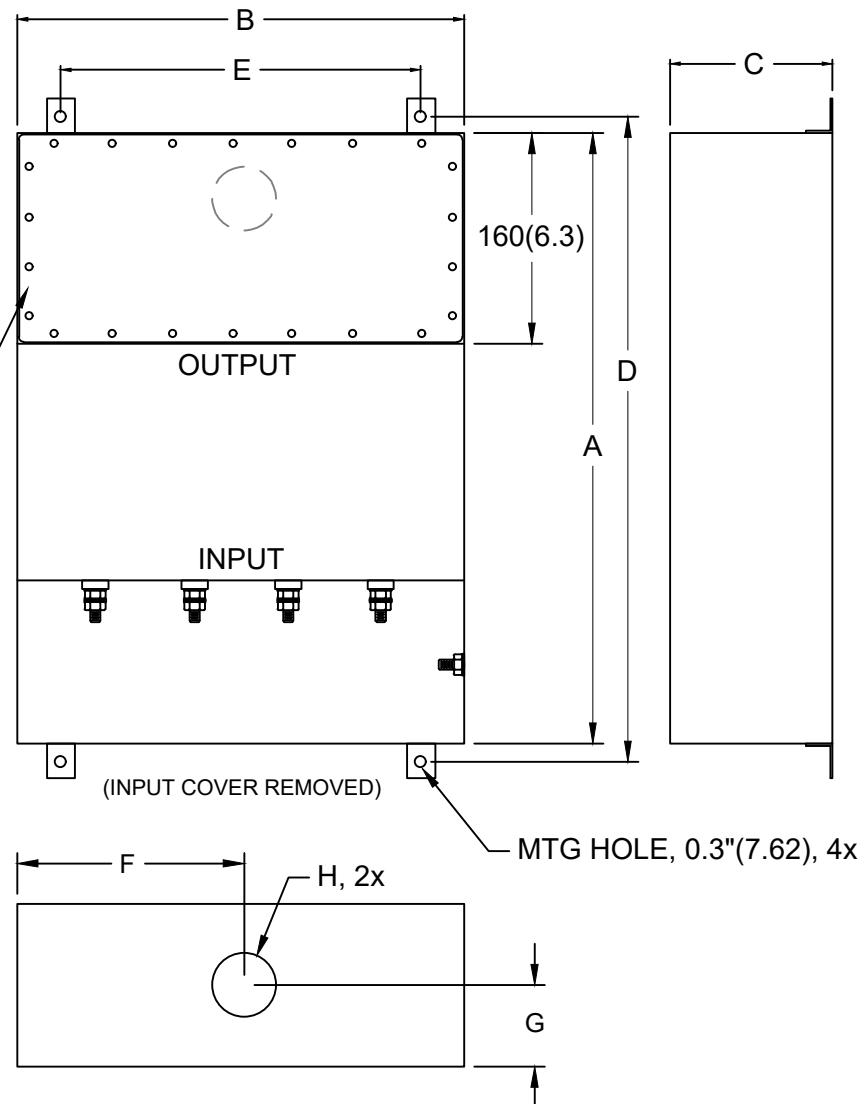


CONFORMS TO
UL STD 1283

Intertek
5025116

GASKETED OUTPUT
COMPARTMENT

EMI



NOTES:

1. FOR DIFFERENT CUTOUTS, CONSULT FACTORY.
2. FILTER IS BIDIRECTIONAL. IF INSTALLING FILTER INTERNAL TO SCIF RUN POWER INPUT WIRING INTO FILTER EMI GASKETED OUTPUT COMPARTMENT.

MODEL	AMPS	TERMINAL	DIMENSIONS - MM (IN)								WEIGHT LBS(KG)
			A	B	C	D	E	F	G	H	
PFMF342S-63	63	M10	838	558	160	876	508	279	83	50	145 (66)
			(33)	(22)	(6.3)	(34.5)	(20)	(11)	(3.27)	(1.97)	