



PFMF370-63-4 4-LINE + GND SCIF/TEMPEST FILTER

SPECIFICATIONS

MAX VOLTAGE: 0-277/0-480VAC

MAX CURRENT: 63A/LINE

FREQUENCY: 50/60HZ

OPERATING TEMP.: -40 TO 65C

HIPOT (L-G): 2200VDC

(PRIOR TO INSTALLING DISCHARGE RESISTORS)

DISCHARGE VOLT. (@277V): <30V in 30S

VOLT. DROP: <2% MAX AT FULL RATED UNITY LOAD

OVERLOAD: 140% RATED CURRENT FOR 15 MINUTES

PERFORMANCE: 100dB (14KHZ TO 40GHZ)

MANUFACTURED IN ACCORDANCE WITH

THE FOLLOWING STANDARDS:

MIL-STD-220

MIL-F-15733

MIL-STD-810

LV DIRECTIVE



Intertek
5025116

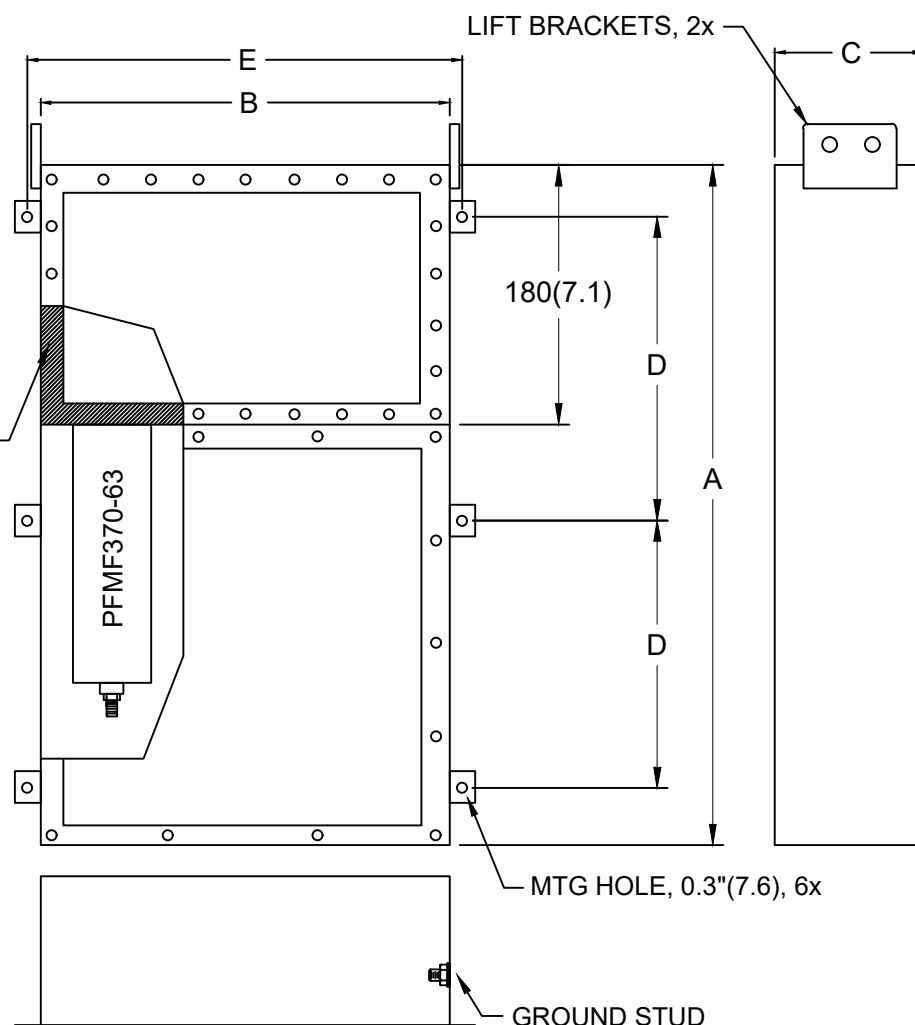
CONFORMS TO
UL STD 1283

NOTES:

1. CONDUIT CUTOUTS BY END USER.
2. FILTER IS BIDIRECTIONAL. IF INSTALLING FILTER INTERNAL TO SCIF RUN POWER INPUT WIRING INTO FILTER EMI GASKETED OUTPUT COMPARTMENT.

GASKETED OUTPUT
COMPARTMENT

EMI



MODEL	AMPS	TERMINAL	DIMENSIONS (MM)					WEIGHT LBS(KG)	MTG LEGS
			A	B	C	D	E		
PFMF370-63-4	63	M10	1067	660	185	483	698	280 (127.3)	370100ML
			(42)	(26)	(7.3)	(19)	(27.5)		