



PFMF870DLT-4
4-LINE DATA SCIF/FACILITY FILTER
(E.G. RS485 TO 115KHZ)
DC-250KHZ PASSBAND
100/50 OHMS (L-L/L-G)

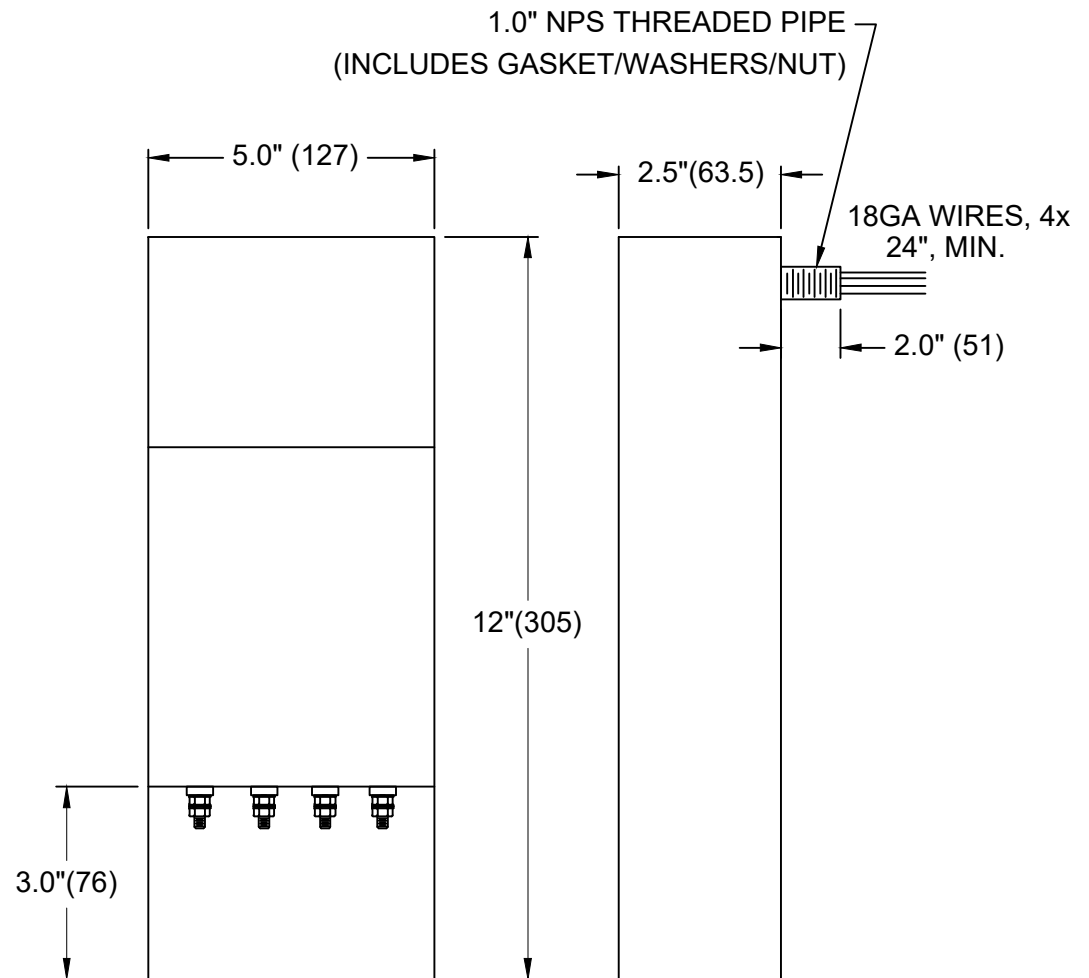
SPECIFICATIONS

MAX VOLTAGE: 0-250VAC/0-250VDC
OPERATING FREQUENCY: DC-60HZ
RATED CURRENT: 4A/LINE
AMBIENT TEMP.: -40 TO 65C
HIPOT (L-G): 1000VDC
TERMINALS: M5
PERFORMANCE: 100dB (5MHZ TO 20GHZ)
TYP. WEIGHT, LBS (KG): 11 (5.0)

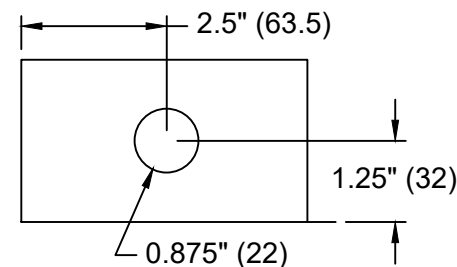
ADDITIONAL DETAILS:

1. FOR INDOOR CONTROLLED ENVIRONMENTS
2. ALL EMI SEAMS 100% WELDED
3. FOR DIFFERENT CONDUIT CUTOUT OR HOLE LOCATION, CONSULT FACTORY

SPECIFICATIONS SUBJECT TO CHANGE



(COVER REMOVED FOR CLARITY)



(CUTOUT FOR 0.5" CONDUIT)