



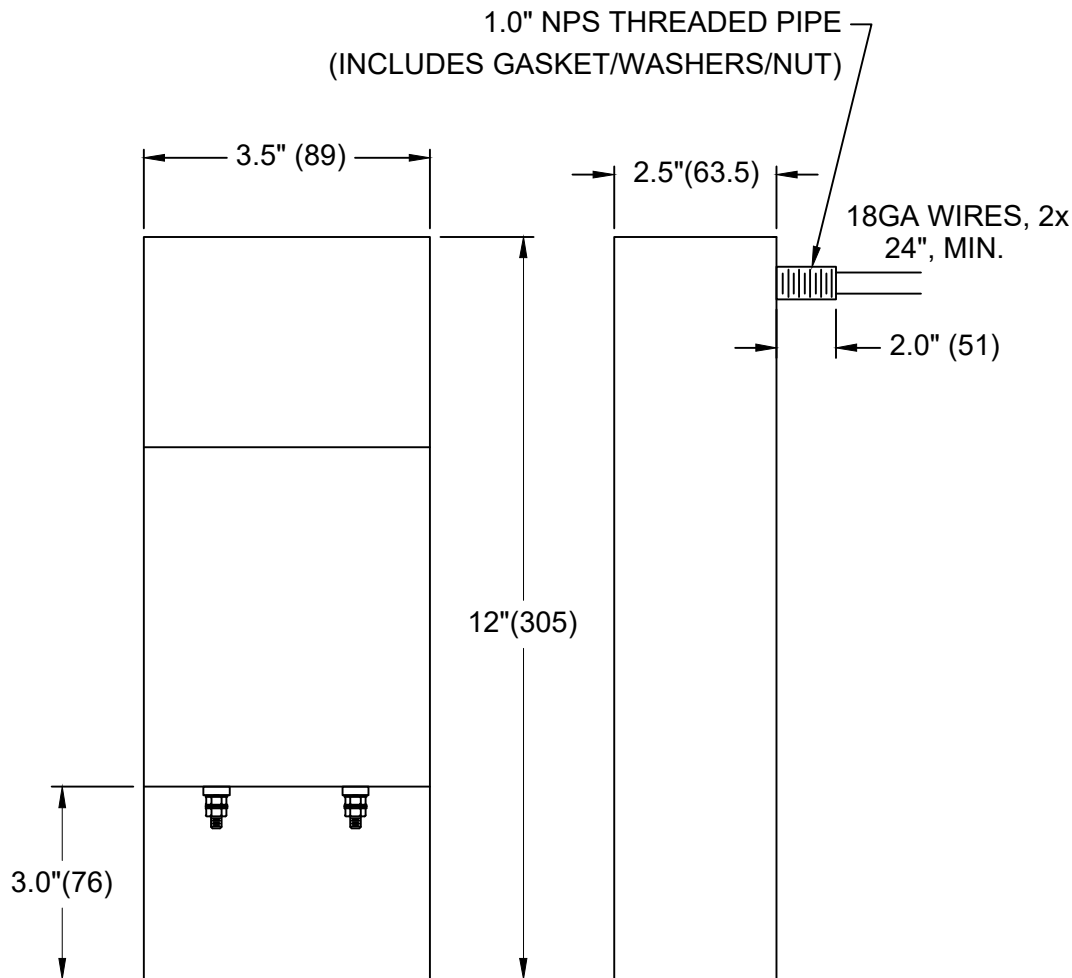
PFMF880DLT-2
2-LINE DATA SCIF/FACILITY FILTER
(E.G. 128KB DATA)
DC-300KHZ PASSBAND
150/75 OHMS (L-L/L-G)

SPECIFICATIONS

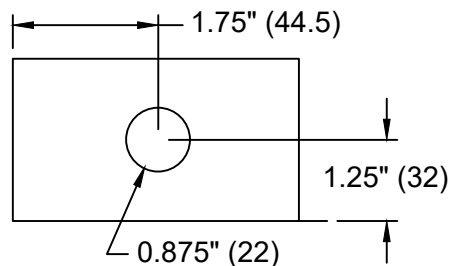
MAX VOLTAGE: 0-250VAC/0-250VDC
OPERATING FREQUENCY: DC-60HZ
RATED CURRENT: 4A/LINE
AMBIENT TEMP.: -40 TO 65C
HIPOT (L-G): 1000VDC
TERMINALS: M5
PERFORMANCE: 100dB (5MHZ TO 20GHZ)
TYP. WEIGHT, LBS (KG): 8 (3.6)

ADDITIONAL DETAILS:

- 1. FOR INDOOR CONTROLLED ENVIRONMENTS
- 2. ALL EMI SEAMS 100% WELDED
- 3. FOR DIFFERENT CONDUIT CUTOUT OR HOLE LOCATION, CONSULT FACTORY



(COVER REMOVED FOR CLARITY)



(CUTOUT FOR 0.5" CONDUIT)