



**PFMT455S-300**  
**4-LINE + GND TEMPEST FILTER**

**SPECIFICATIONS**

MAX VOLTAGE: 0-277/0-480VAC

MAX CURRENT: 300A/LINE

FREQUENCY: 50/60HZ

OPERATING TEMP.: -40 TO 70C

HIPOT (L-G): 2200VDC

(PRIOR TO INSTALLING DISCHARGE RESISTORS)

DISCHARGE VOLT. (@277V): <30V IN 30S

OVERLOAD: 140% RATED CURRENT FOR 15 MINUTES

PERFORMANCE: >100dB (10KHZ TO 40GHZ)

SHIELDING EFFECTIVENESS: >100dB (10KHZ TO 40GHZ)

ENCLOSURE: NEMA 1 (14GA MINIMUM)

MANUFACTURED IN ACCORDANCE WITH

THE FOLLOWING STANDARDS:

MIL-STD-220

MIL-F-15733

MIL-STD-810

LV DIRECTIVE

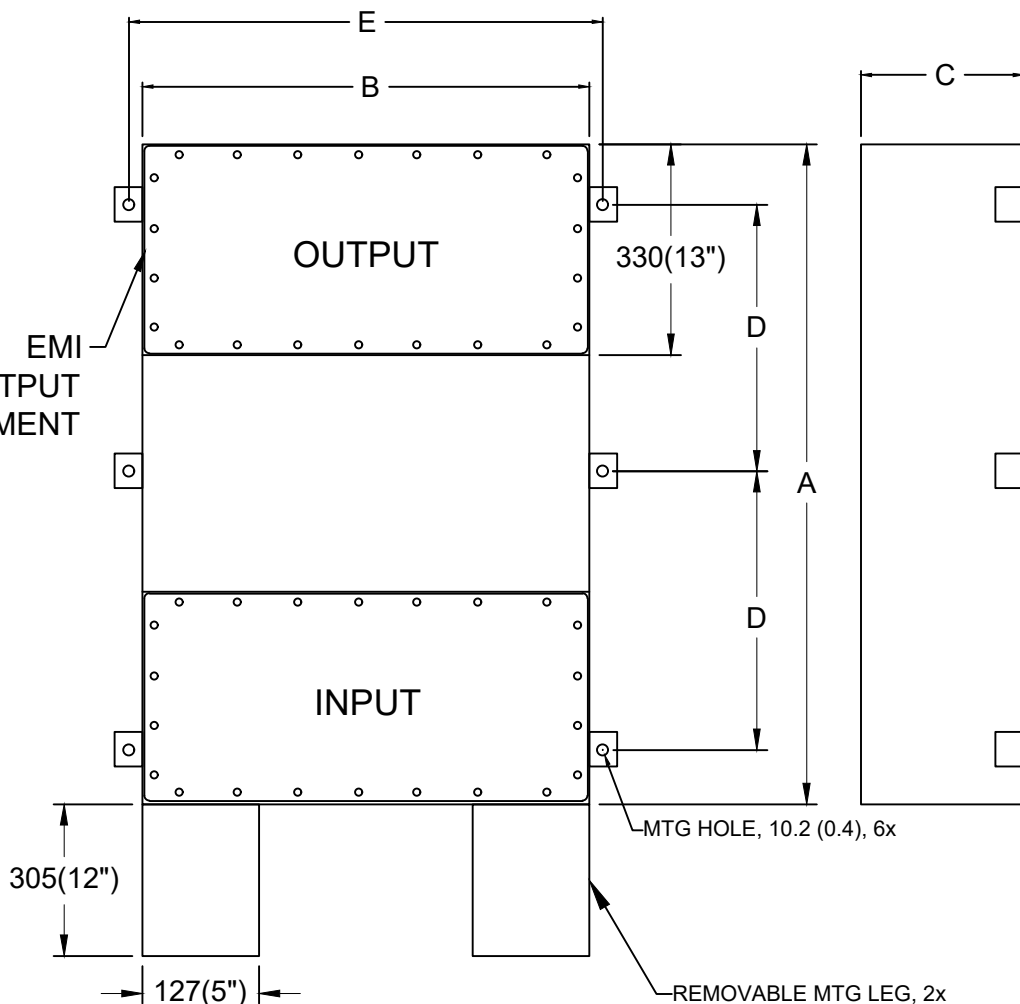


CONFORMS TO  
 UL STD 1283

**NOTES:**

1. CONDUIT CUTOUTS BY END USER.
2. FILTER IS BIDIRECTIONAL. IF INSTALLING FILTER INTERNAL TO SCIF RUN POWER INPUT WIRING INTO FILTER EMI GASKETED OUTPUT COMPARTMENT.
3. GROUND STUD LOCATED IN INPUT AND OUTPUT COMPARTMENTS.

NOTE: LIFT BRACKETS PROVIDED ON CABINET



MODEL	AMPS	TERMINALS	DIMENSIONS - MM (IN)					WEIGHT LBS(KG)
			A	B	C	D	E	
PFMT455S-300	300	M16	1422	762	356	635	813	295(134.1)
			(56)	(30)	(14)	(25)	(32)	