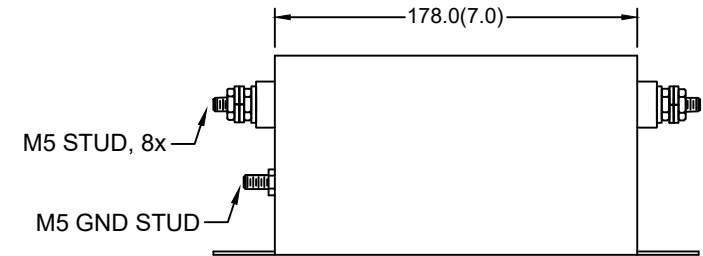
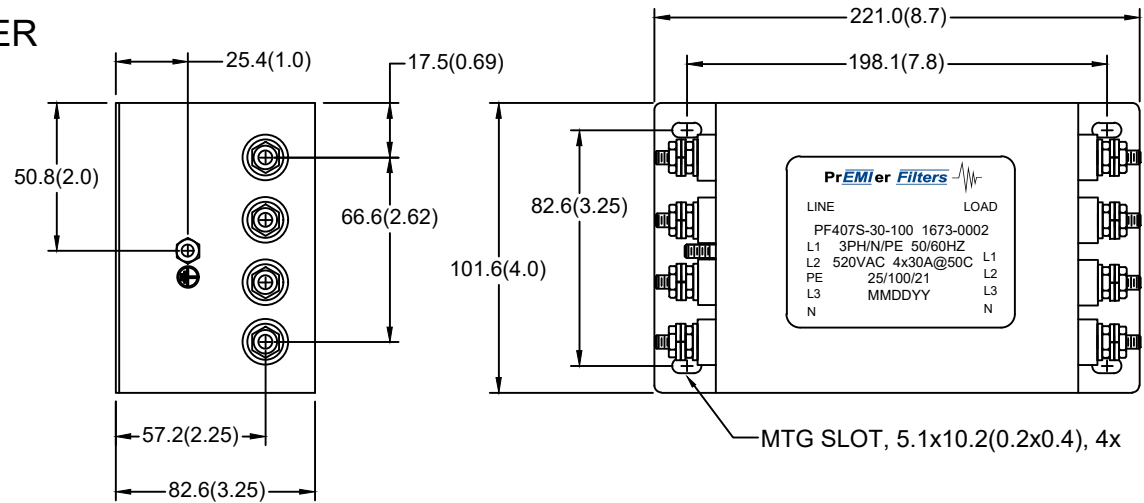


PF407S-30-100

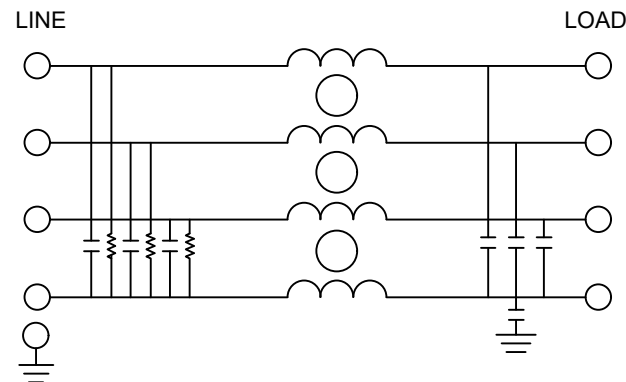
3PH WYE COMMERCIAL/INDUSTRIAL FILTER SINGLE STAGE / CHASSIS MOUNT

SPECIFICATIONS

- MAX VOLTAGE: 0-520VAC
- MAX CURRENT: 30A/LINE
- USABLE FREQUENCY: 50/60/400HZ
- OPERATING TEMP.: -40 TO 50C
- LEAKAGE CURRENT (250V/60HZ): <1mA
- TYP. WEIGHT, LB(KG): 8.0(3.6)
- CLIMATIC CLASS: 25/100/21
- DESIGNED AND MANUFACTURED IN ACCORDANCE WITH THE FOLLOWING STANDARDS:
 - EN60939-3
 - CSA22.2 NO. 8
 - LV DIRECTIVE



SCHEMATIC



| TYPICAL INSERTION LOSS, 50/50 OHM | | | | | |
|-----------------------------------|------|------|----|-----|-----|
| FREQ(HZ) | 150K | 500K | 1M | 10M | 30M |
| CM,dB | 60 | 70 | 72 | 58 | 52 |
| DM, dB | 50 | 68 | 72 | 70 | 66 |