



**PFMF301S-100**  
**1-LINE SCIF/FACILITY FILTER**

**SPECIFICATIONS**

MAX VOLTAGE: 0-277VAC

MAX CURRENT: 100A/LINE

FREQUENCY: 50/60HZ

OPERATING TEMP.: -40 TO 65C

HIPOT (L-G): 2200VDC

(PRIOR TO INSTALLING DISCHARGE RESISTORS)

DISCHARGE VOLT. (@277V): <30V IN 30S

VOLT. DROP: <2% MAX AT FULL RATED UNITY LOAD

OVERLOAD: 140% RATED CURRENT FOR 15 MINUTES

PERFORMANCE: 100dB (14KHZ TO 40GHZ)

MANUFACTURED IN ACCORDANCE WITH

THE FOLLOWING STANDARDS:

MIL-STD-220

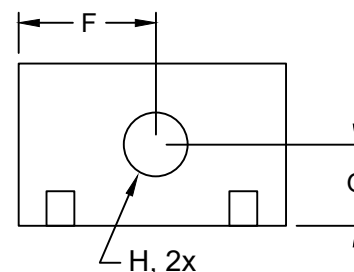
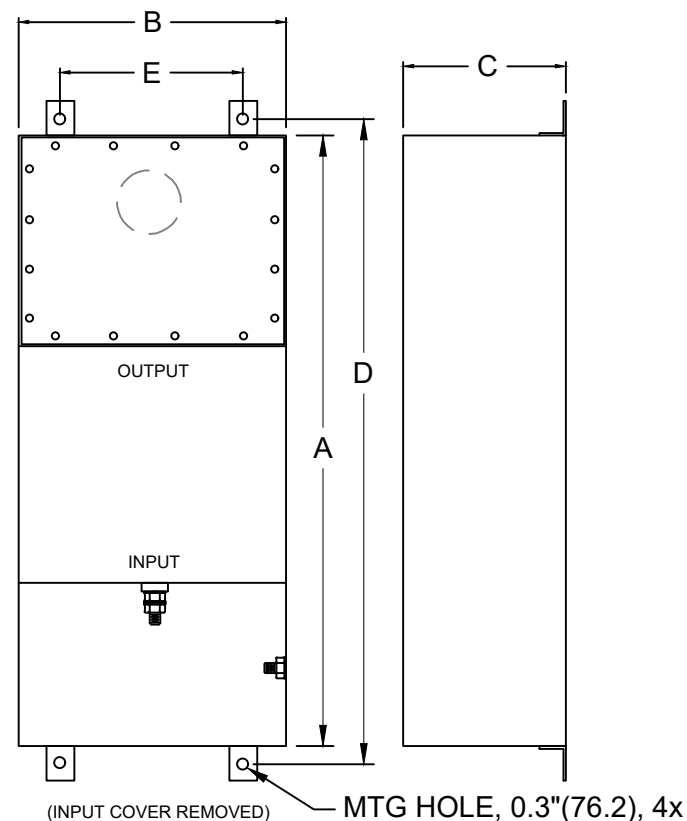
MIL-F-15733

MIL-STD-810

LV DIRECTIVE



CONFORMS TO  
 UL STD 1283



(FOR DIFFERENT CUTOUT SIZES OR LOCATIONS, CONSULT FACTORY)

MODEL	AMPS	TERMINAL	DIMENSIONS, MM(IN)								WEIGHT LB(KG)
			A	B	C	D	E	F	G	H	
PFMF301S-100	100	M10	838	152	165	876	102	76	82.6	35	35 (15.9)
			(33)	(6)	(6.5)	(34.5)	(4)	(3)	(3.25)	(1.38)	