



PFMF301S-20

1-LINE SCIF/FACILITY FILTER

SPECIFICATIONS

MAX VOLTAGE: 0-277VAC

MAX CURRENT: 20A/LINE

FREQUENCY: 50/60HZ

OPERATING TEMP.: -40 TO 65C

HIPOT (L-G): 2200VDC

(PRIOR TO INSTALLING DISCHARGE RESISTORS)

DISCHARGE VOLT. (@277V): <30V IN 30S

VOLT. DROP: <2% MAX AT FULL RATED UNITY LOAD

OVERLOAD: 140% RATED CURRENT FOR 15 MINUTES

PERFORMANCE: 100dB (14KHZ TO 40GHZ)

MANUFACTURED IN ACCORDANCE WITH
THE FOLLOWING STANDARDS:

MIL-STD-220

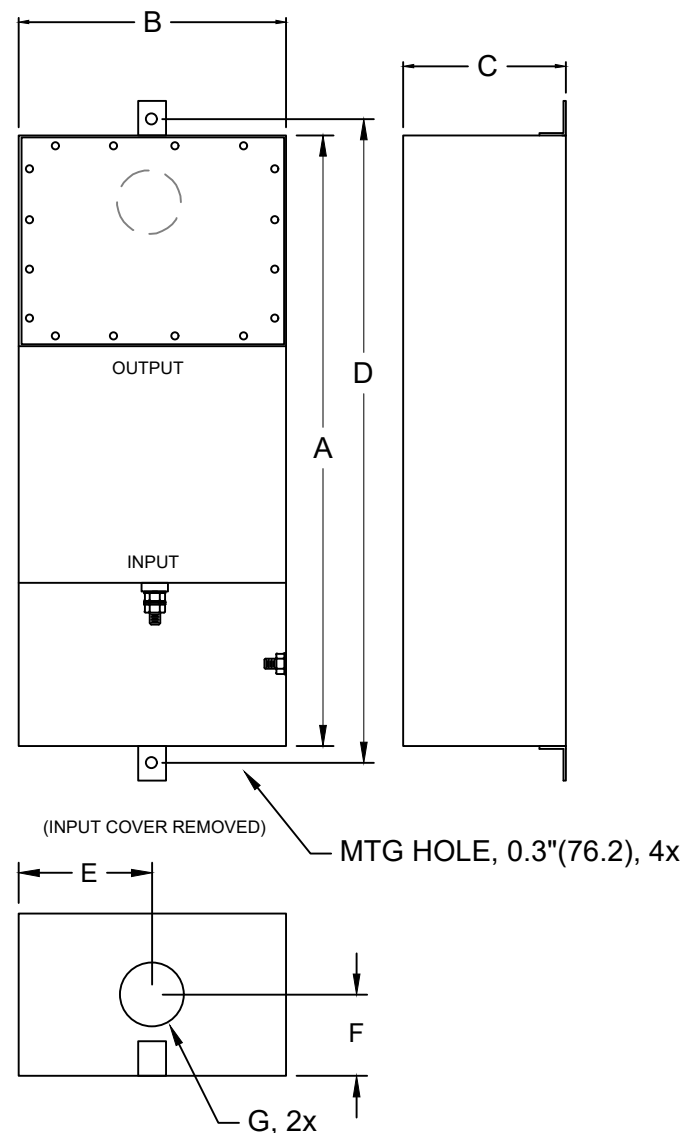
MIL-F-15733

MIL-STD-810

LV DIRECTIVE



CONFORMS TO
UL STD 1283



(FOR DIFFERENT CUTOUT SIZES OR LOCATIONS, CONSULT FACTORY)

MODEL	AMPS	TERMINAL	DIMENSIONS, MM(IN)							WEIGHT LB(KG)
			A	B	C	D	E	F	G	
PFMF301S-20	20	M6	508	102	127	546	51	63.5	35	15 (6.8)
			(20)	(4)	(5)	(21.5)	(2)	(2.5)	(1.38)	