



PFMF301S-200
1-LINE + GROUND SCIF/FACILITY FILTER

SPECIFICATIONS

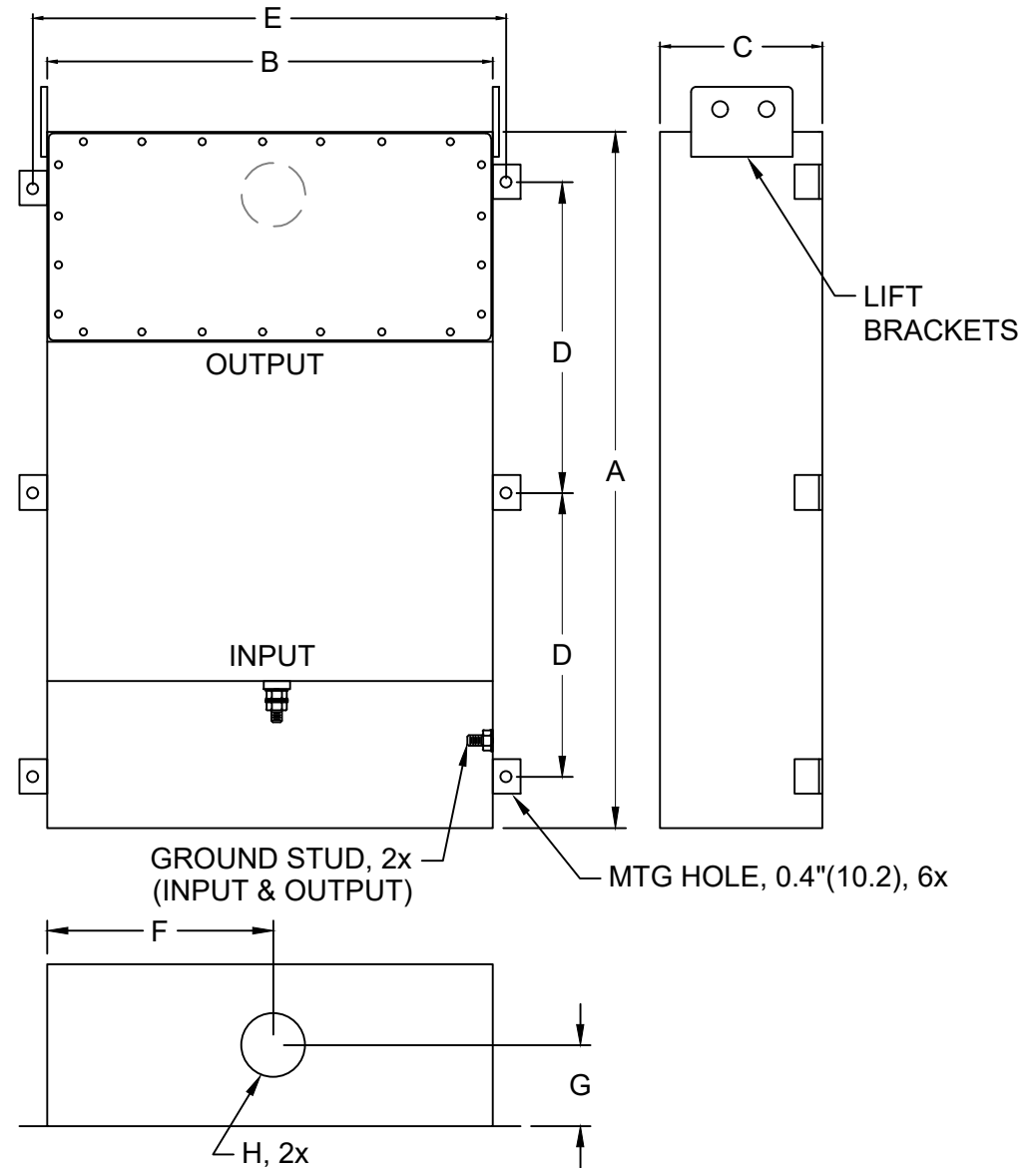
- MAX VOLTAGE: 0-277VAC
- MAX CURRENT: 200A/LINE
- FREQUENCY: 50/60HZ
- OPERATING TEMP.: -40 TO 65C
- HIPOT (L-G): 2200VDC
- DISCHARGE VOLT. (@277V): <30V IN 30S
- VOLT. DROP: <2% MAX AT FULL RATED UNITY LOAD
- OVERLOAD: 140% RATED CURRENT FOR 15 MINUTES
- PERFORMANCE: 100dB (14KHZ TO 40GHZ)
- MANUFACTURED IN ACCORDANCE WITH

THE FOLLOWING STANDARDS:

- MIL-STD-220
- MIL-F-15733
- MIL-STD-810
- LV DIRECTIVE



CONFORMS TO
 UL STD 1283



(FOR DIFFERENT CUTOUT SIZES OR LOCATIONS, CONSULT FACTORY)

MODEL	AMPS	TERMINAL	DIMENSIONS, MM(IN)								WEIGHT LBS(KG)
			A	B	C	D	E	F	G	H	
PFMF301S-200	200	M12	1067	203	254	483	152	101.6	127	50	80 (36.4)
			(42)	(8)	(10)	(19)	(6)	(4)	(5)	(2)	