



## PFMF301S-250

### 1-LINE + GROUND SCIF/TEMPEST FILTER

#### SPECIFICATIONS

MAX VOLTAGE: 0-277VAC

MAX CURRENT: 250A/LINE

FREQUENCY: 50/60HZ

OPERATING TEMP.: -40 TO 65C

HIPOT (L-G): 2200VDC

DISCHARGE VOLT. (@277V): <30V IN 30S

VOLT. DROP: <2% MAX AT FULL RATED UNITY LOAD

OVERLOAD: 140% RATED CURRENT FOR 15 MINUTES

PERFORMANCE: 100dB (14KHZ TO 40GHZ)

MANUFACTURED IN ACCORDANCE WITH

THE FOLLOWING STANDARDS:

MIL-STD-220

MIL-F-15733

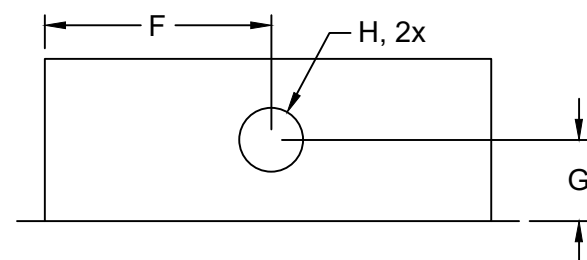
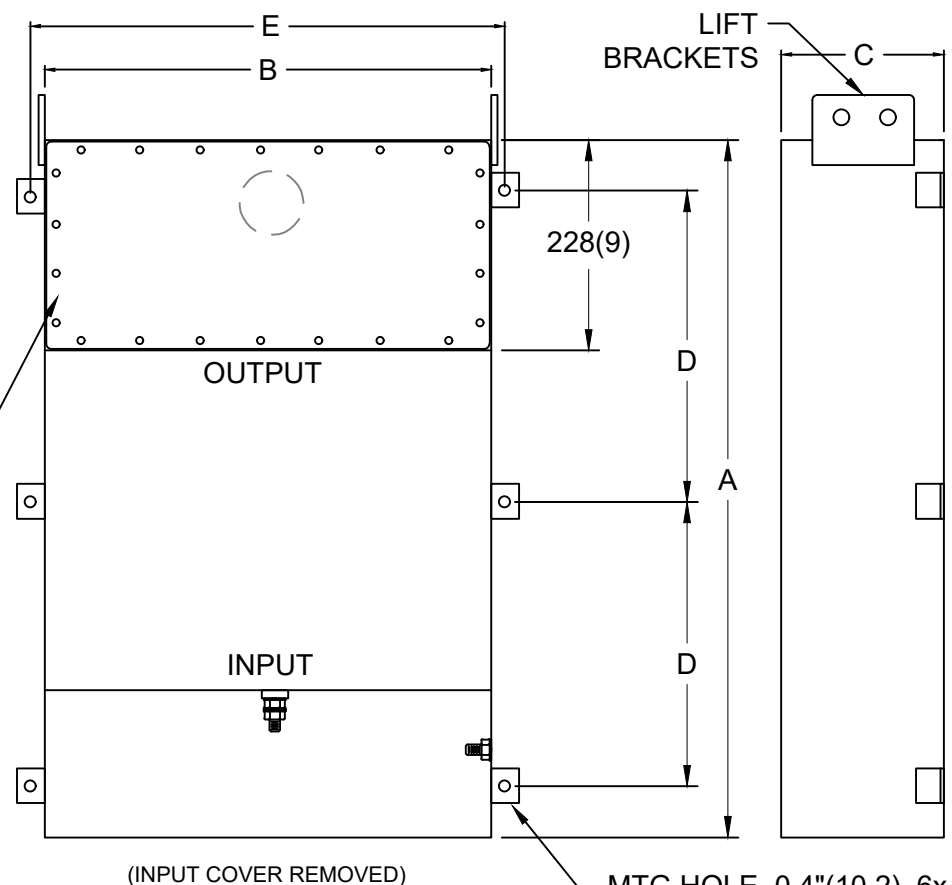
MIL-STD-810

LV DIRECTIVE



CONFORMS TO  
UL STD 1283

EMI  
GASKETED OUTPUT  
COMPARTMENT



#### NOTES:

1. FOR DIFFERENT CUTOUTS, CONSULT FACTORY.
2. FILTER IS BIDIRECTIONAL. IF INSTALLING FILTER INTERNAL TO SCIF RUN POWER INPUT WIRING INTO FILTER EMI GASKETED OUTPUT COMPARTMENT.

MODEL	AMPS	TERMINAL	DIMENSIONS, MM(IN)								WEIGHT LBS(KG)
			A	B	C	D	E	F	G	H	
PFMF301S-250	250	M12	1067	203	254	483	152	101.6	127	50	80 (36.4)
			(42)	(8)	(10)	(19)	(6)	(4)	(5)	(2)	