

**PFMF370-1200-1**  
**1-LINE + GND SCIF/FACILITY FILTER**

**SPECIFICATIONS**

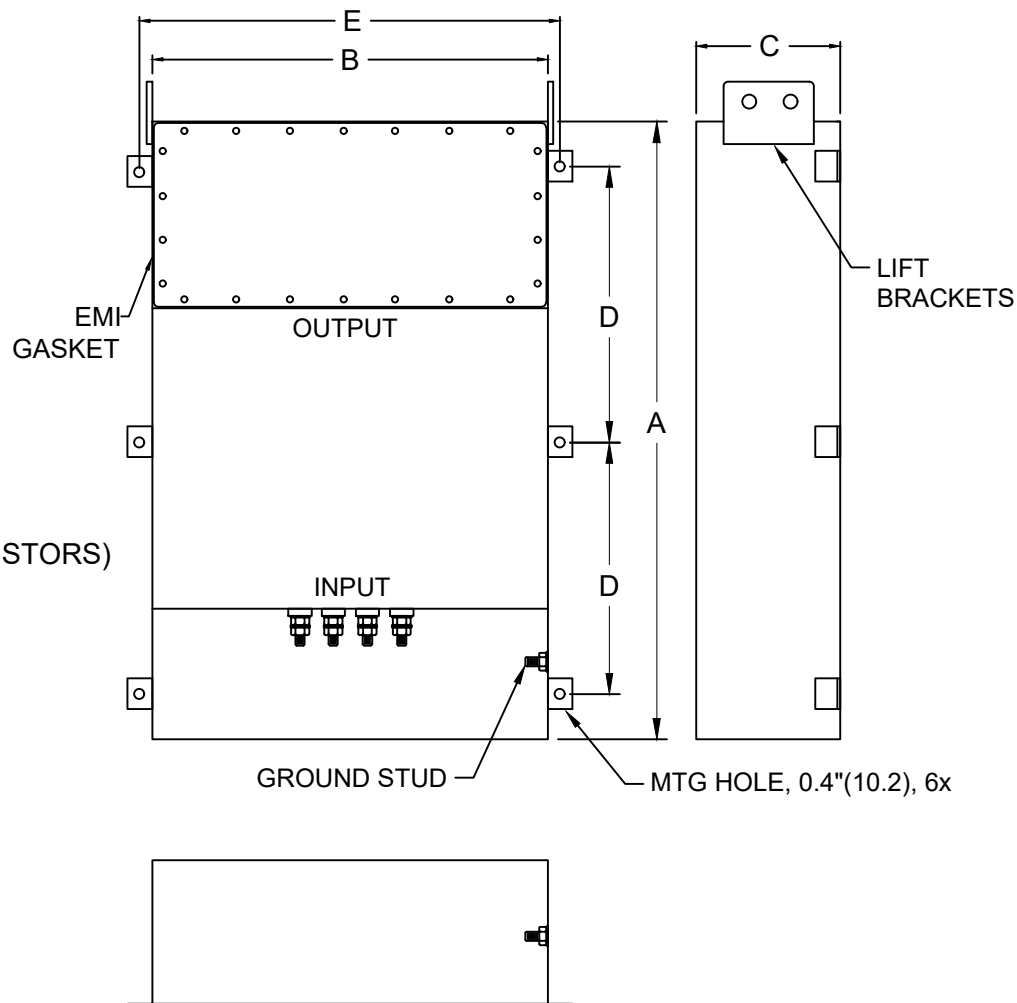
- MAX VOLTAGE: 0-277VAC
- MAX CURRENT: 1200A/LINE
- FREQUENCY: 50/60HZ
- OPERATING TEMP.: -40 TO 65C
- HIPOT (L-G): 2200VDC (PRIOR TO INSTALLING DISCHARGE RESISTORS)
- DISCHARGE VOLT. (@277V): <30V IN 30S
- VOLT. DROP: <2% MAX AT FULL RATED UNITY LOAD
- OVERLOAD: 140% RATED CURRENT FOR 15 MINUTES
- PERFORMANCE: 100dB (14KHZ TO 40GHZ)
- MANUFACTURED IN ACCORDANCE WITH

THE FOLLOWING STANDARDS:

- MIL-STD-220
- MIL-F-15733
- MIL-STD-810
- LV DIRECTIVE



CONFORMS TO  
 UL STD 1283



INPUT AND OUTPUT CONDUIT/WIRE PENETRATIONS BY END USER.

MODEL	AMPS	TERMINAL	DIMENSIONS - MM (IN)					WEIGHT LBS(KG)
			A	B	C	D	E	
PFMF370-1200-1	1200	4xM16	2235 (88)	355 (14)	508 (20)	1016 (40)	406 (16)	530 (241)