



PFMF370-1600-3 3-LINE + GND SCIF/TEMPEST FILTER SINGLE MODULE DESIGN

SPECIFICATIONS

MAX VOLTAGE: 0-277/0-480VAC

MAX CURRENT: 1600A/LINE

FREQUENCY: 50/60HZ

OPERATING TEMP.: -40 TO 65C

HIPOT (L-G): 2200VDC

(PRIOR TO INSTALLING DISCHARGE RESISTORS)

DISCHARGE VOLT. (@277V): <30V IN 30S

VOLT. DROP: <2% MAX AT FULL RATED UNITY LOAD

OVERLOAD: 140% RATED CURRENT FOR 15 MINUTES

PERFORMANCE: 100dB (14KHZ TO 40GHZ)

MANUFACTURED IN ACCORDANCE WITH
THE FOLLOWING STANDARDS:

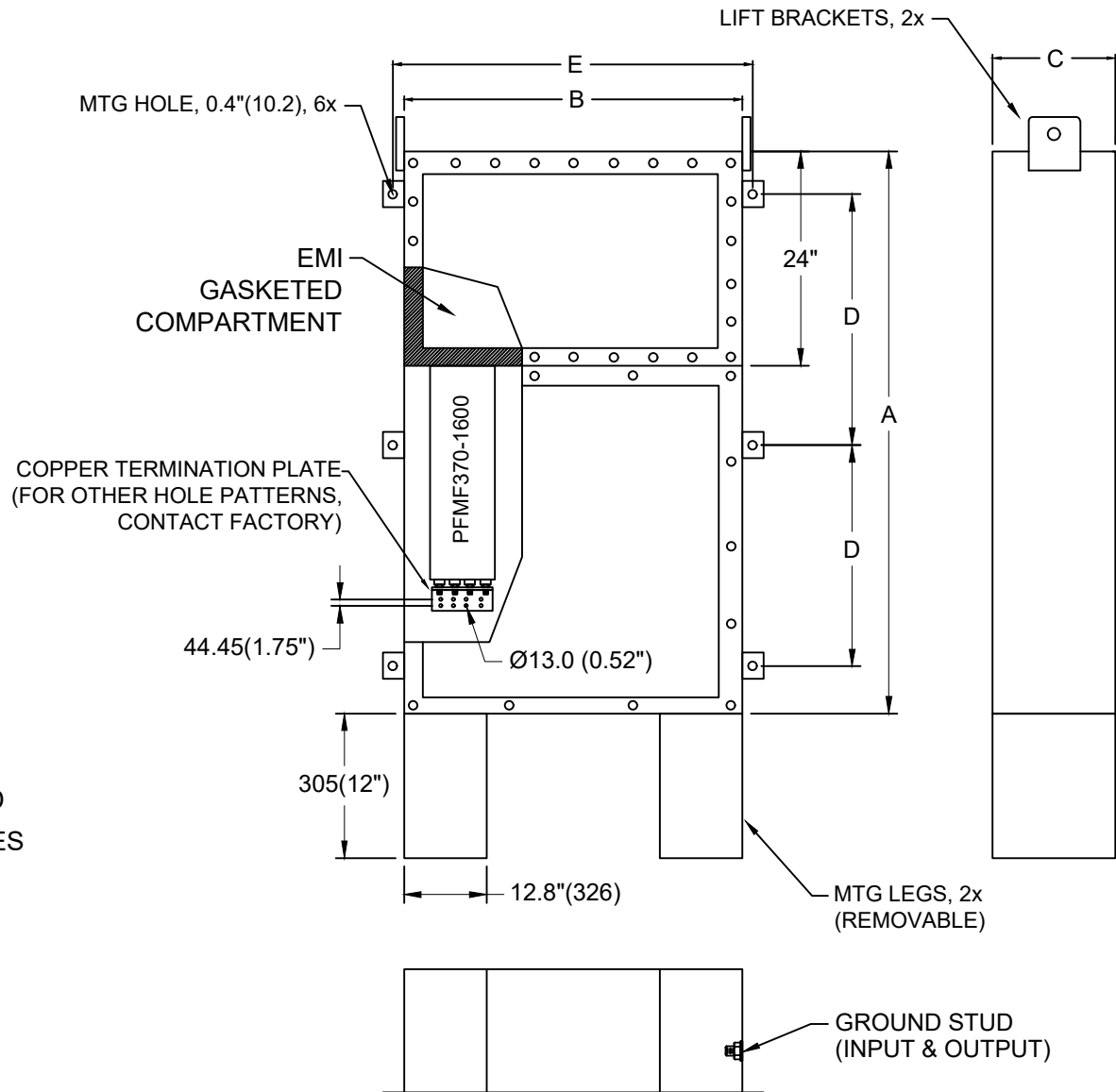
UL1283

MIL-STD-220

MIL-F-15733

MIL-STD-810

LV DIRECTIVE



INPUT AND OUTPUT CONDUIT/WIRE PENETRATIONS BY END USER.

MODEL	AMPS	TERMINAL	DIMENSIONS - MM (IN)					WEIGHT LBS(KG)
			A	B	C	D	E	
PFMF370-1600-3	1600	CU MTG PLATE	2591 (102)	1219 (48)	660 (26)	1194 (47)	1270 (50)	3350 (1522.7)